

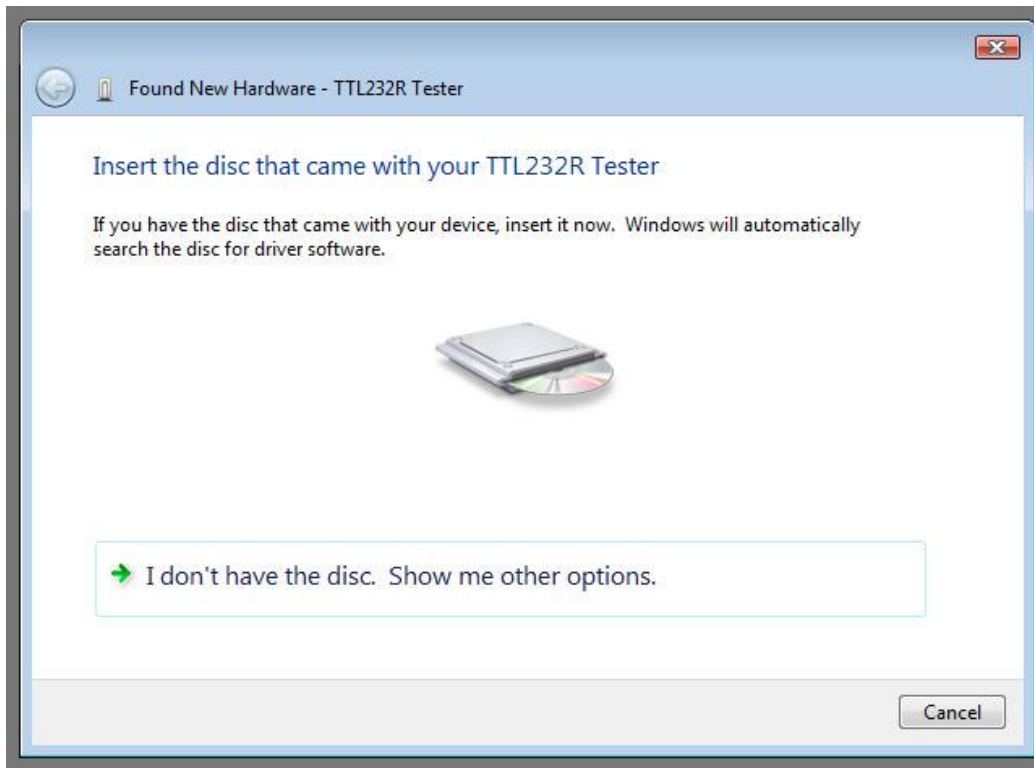
VISTA INSTALLATION

1. Plug device in and wait for this window to pop up.



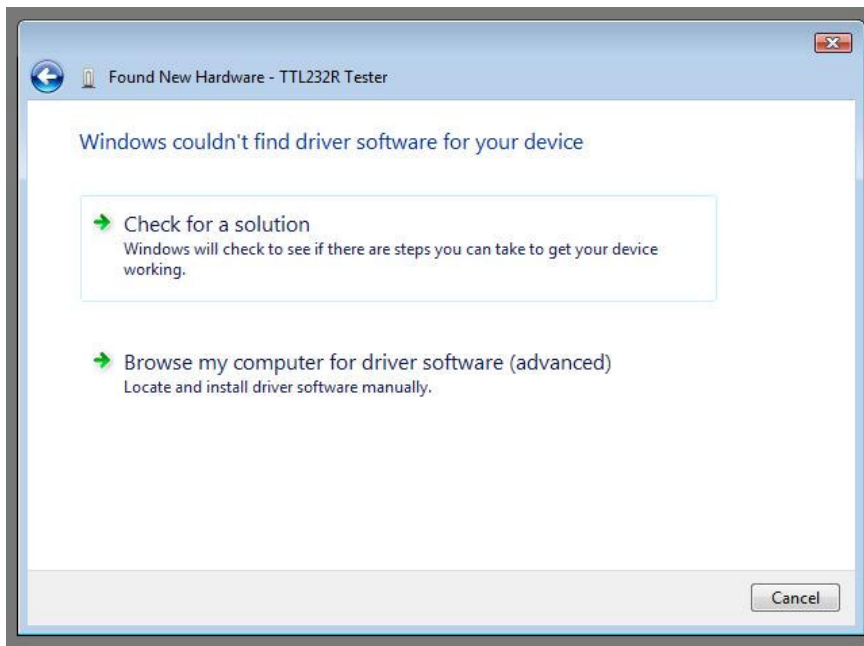
2. Select "Locate and install driver software (recommended)."

The next screen should pop up.



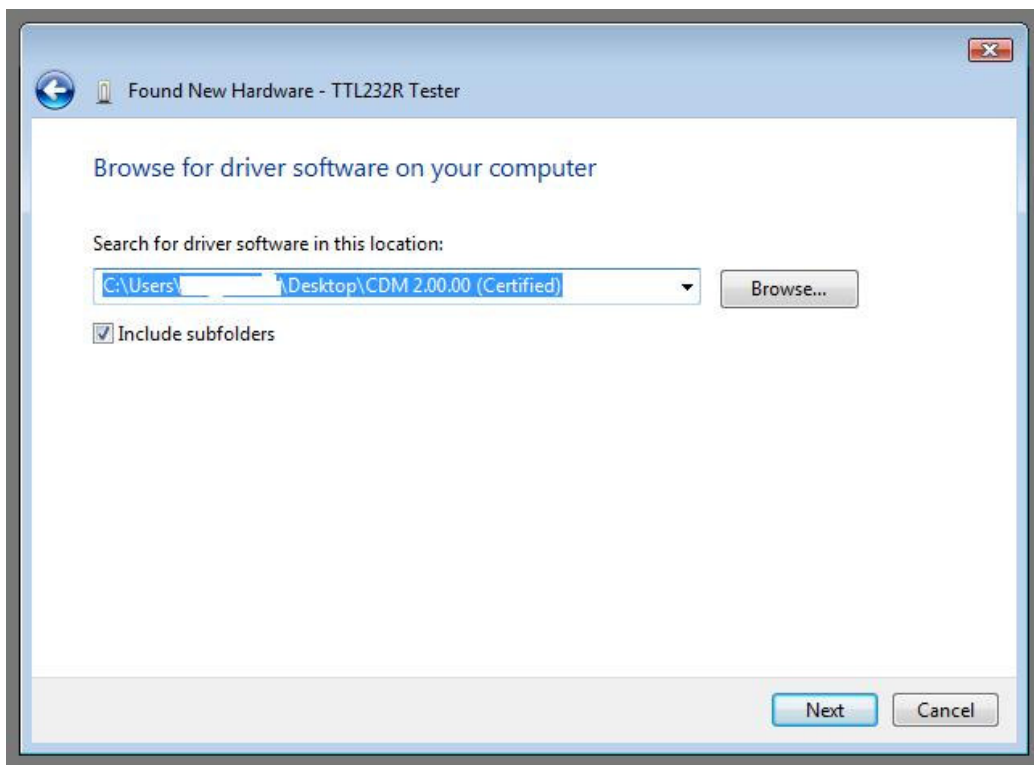
3. Select “I don’t have the disk. Show me other options”

The next screen should pop up.



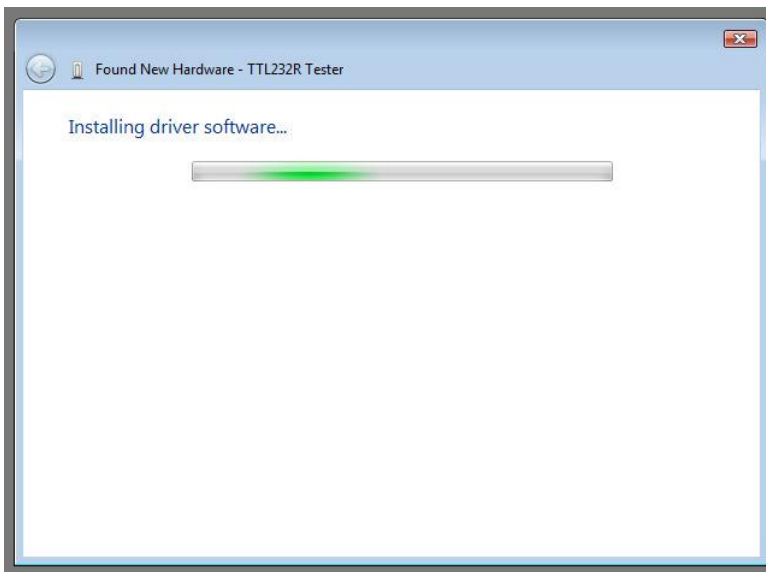
4. Select “Browse my computer for driver software (advanced)”.

The next screen should pop up.



5. Put in the folder where you unzipped the driver to and press “Next”

The next screen should pop up.



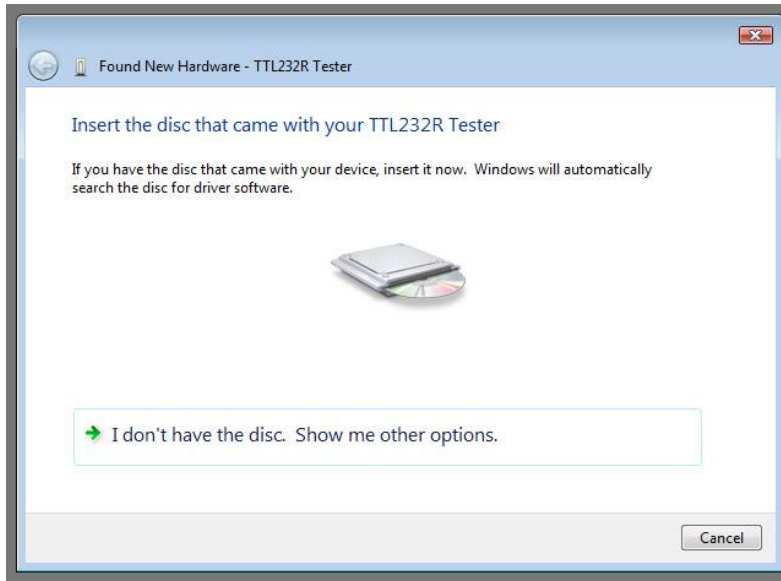
6. Wait.

The next screen should pop up.



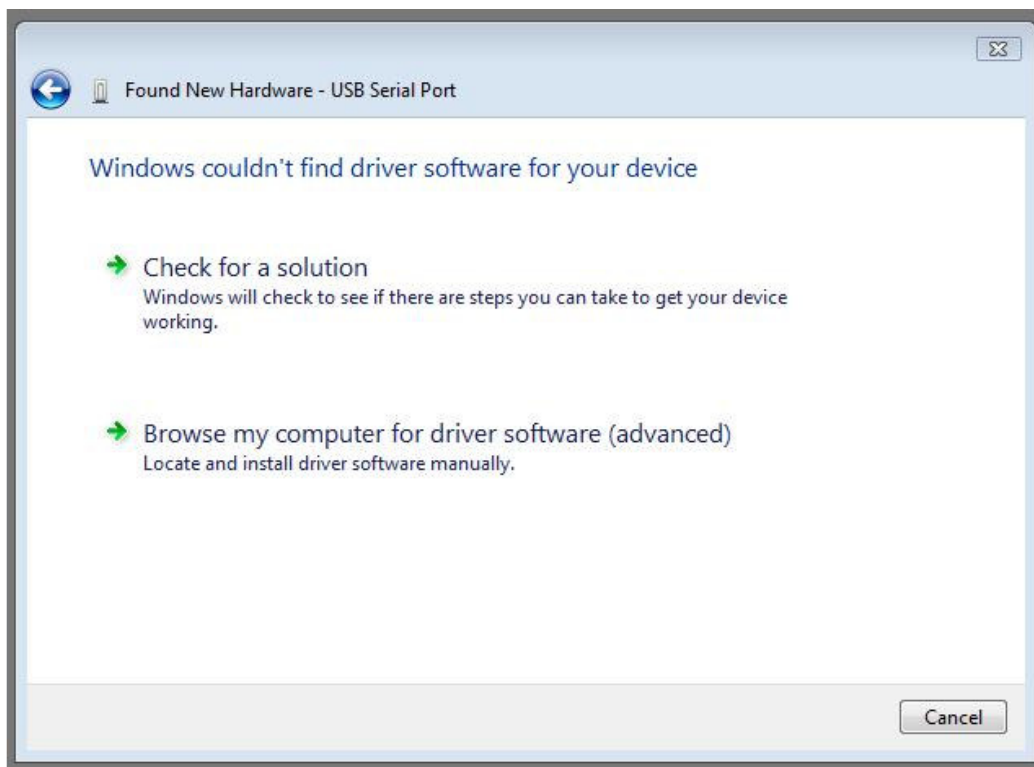
7. Wait

The next screen should pop up.



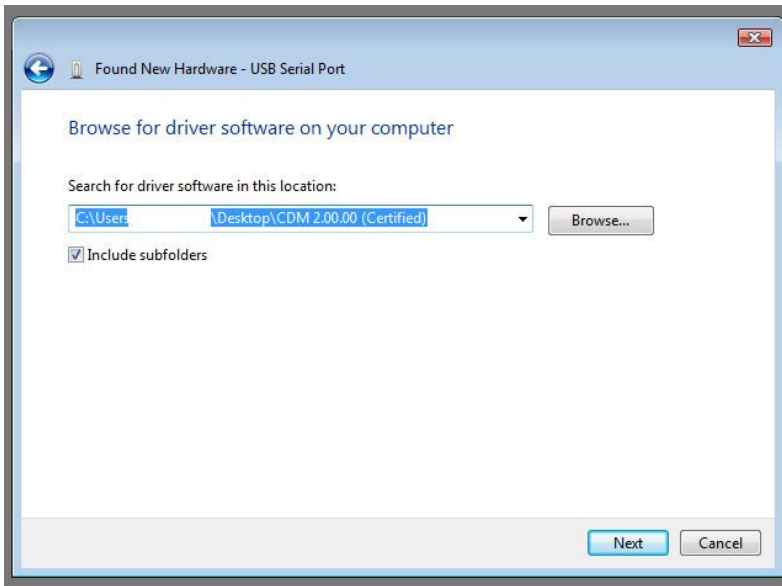
8. Select “ I don’t have the disk. Show me other options”

The next screen should pop up.



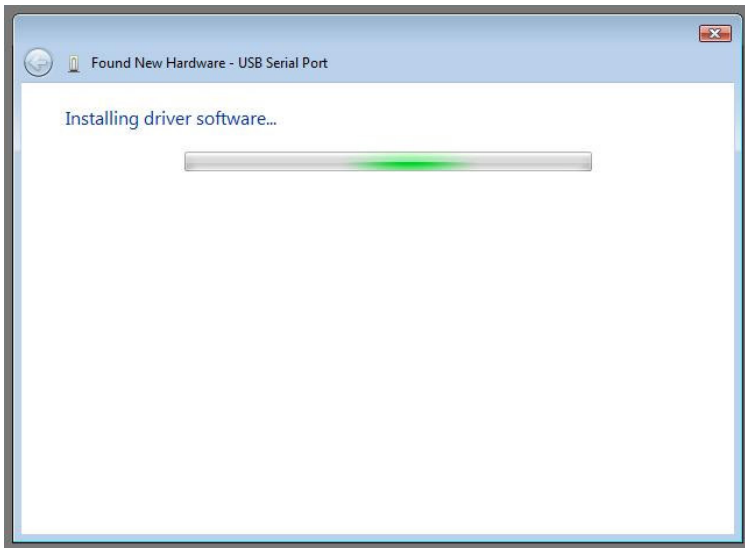
9. Select “Browse my computer for driver software (advanced)”.

The next screen should pop up.



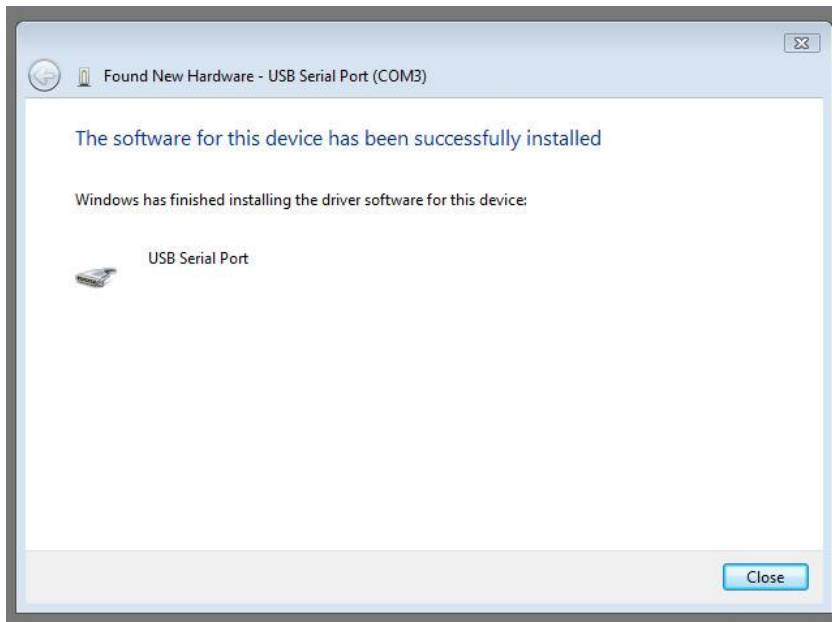
10. Put in the folder where you unzipped the driver to and press “Next”

The next screen should pop up.

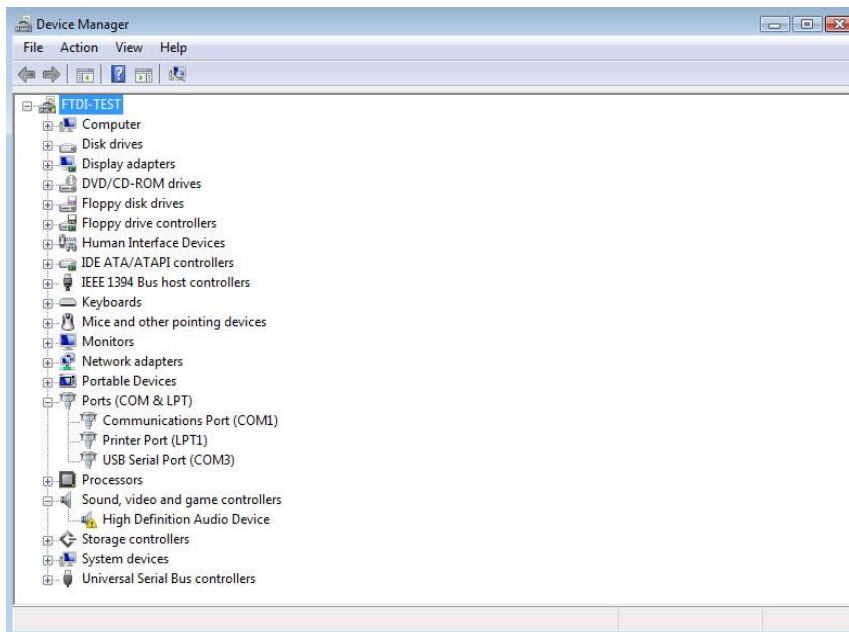


11. Wait

The next screen should pop up.



12. Finished



13. View the COM port assigned the device in Device Manager